

PROJECT:
Jones Library Renovation
43 Amity Street
Amherst, MA 01002
Project No.

ADDENDUM NO. 1 02/06/2024

Posted: 02/07/2024 at 9:34AM EST

Awarding Authority/Owner:

Town of Amherst
4 Boltwood Avenue
Amherst, MA 01002

Reference Contract Documents (drawings and specifications) dated 01/10/2024

The attention of Bidders submitting proposals for the above subject project is called to the following addendum to the specifications and drawings. The items set forth herein, whether of omission, addition, substitution, or clarifications are all to be included in and form a part of the proposal submitted.

THE NUMBER OF THIS ADDENDUM (1) MUST BE ENTERED IN THE APPROPRIATE SPACE "B" PROVIDED AFTER THE WORD "NUMBERS" OF THE CONTRACT FORM ENTITLED "FORM FOR GENERAL BID," AND IN SPACE "B" OF THE "FORM FOR SUB-BID."

BID DOCUMENT MODIFICATIONS ARE AS FOLLOWS.

Drawings:

- Add the following new drawings. (See attached)
LS05 Lighting Schedule 1
LS06 Lighting Schedule 2

- Replace the following drawings in their entirety. (See attached)
A120 Reflected Ceiling Plan -Garden Level
A121 Reflected Ceiling Plan -Level 1
A122 Reflected Ceiling Plan -Level 2
A123 Reflected Ceiling Plan -Level 3
E005B Schedules

Other Modifications / Attachments:

The following attachment includes additional modifications, clarifications and/or provisions not included in the items above in this Addendum.
See document at the end of document.

All other of the portions of the Contract Documents remain **unchanged**. Please be reminded to acknowledge this Addendum on the bid forms.

ATTACHMENTS

- LS05 Lighting Schedule 1
- LS06 Lighting Schedule 2
- A120 Reflected Ceiling Plan -Garden Level
- A121 Reflected Ceiling Plan -Level 1
- A122 Reflected Ceiling Plan -Level 2
- A123 Reflected Ceiling Plan -Level 3

--- End of Addendum No. 1 ---

Jones Library

Addendum No. 01
February 06, 2024

The attention of bidders submitting proposals for the above subject is called to the following addendum to the specifications and drawings. The items set forth herein, whether of omission, addition, substitution, or clarification are all to be included in and form a part of the proposal submitted.

The number of the addendum (1) Must be entered in the appropriate space on page 1 of the trade contractor form of bid - M.G.Lc.149A as amended.

Notice to Contractors:

Changes to Drawings:

Architectural:

- A120 - Reflected Ceiling Plan - Garden Level: Removed light fixture tags.
- A121 - Reflected Ceiling Plan – Level 1: Removed light fixture tags.
- A122 - Reflected Ceiling Plan – Level 2: Removed light fixture tags.
- A123 - Reflected Ceiling Plan – Level 3: Removed light fixture tags, updated meeting room RCP to match Electrical.

Electrical

- E005B - Schedules: Removed specific light fixture information from schedules.

Lighting:

- LS05 - Lighting Schedule 1: new sheet
- LS06 - Lighting Schedule 2: new sheet

Changes to Specifications:

Request For Information



Code/Tag	Image	Product / Manufacturer	Attributes	Notes
PC-01		Xico "Micro Square Pendant" Description: 1.4" Low-Profile 8" Linear Direct LED Pendant Mount	Specification: # MSQ140-P-8-MWH (CONFRM): E1-OFL-S80-30-DLAM-75-NN-NN-UNV-FD01-NN-NN-X_CRESTRON-T1/2/3 (EC TO COORDINATE)-RCWH2-S48WH Approved Equals: Starfire, Axis Lighting: LED (Integral) Wattage (W): 9 Wf (72 W Total) Output (lm): 750 lm f (6000 lm Total) CCT (K): 3000K CRI: 80 Dimming Protocol: 0-10V to 1% Voltage (V): 120-277V Distribution: Lambertian Label/IP: Dry Finish: White (Architect to Confirm) Location: Garden Level Large Conference Room	1. EC to verify voltage (prior to ordering). 2. EC to confirm hang height w/ Architect, prior to final installation. 3. EC to confirm finish w/ Architect/Interior Designer, prior to ordering. 4. EC to confirm ceiling type/mounting type, prior to ordering. 5. EC to confirm control system, and compatibility with driver prior to ordering.
PC-01A		Xico "Micro Square Pendant" Description: 1.4" Low-Profile 8" Linear LED Pendant Mount w/Asymmetric Optics	Specification: # MSQ140-P-8-MWH (CONFRM): E1-OFL-S80-30-DAS015-75-NN-NN-UNV-FD01-NN-NN-X_CRESTRON-T1/2/3 (EC TO COORDINATE)-RCWH2-S48WH Approved Equals: Starfire, Axis Lighting: LED (Integral) Wattage (W): 9 Wf (72 W Total) Output (lm): 750 lm f (6000 lm Total) CCT (K): 3000K CRI: 80 Dimming Protocol: 0-10V to 1% Voltage (V): 120-277V Distribution: Asymmetric Label/IP: Dry Finish: White (Architect to Confirm) Location: Garden Level Large Conference Room	1. EC to verify voltage (prior to ordering). 2. EC to confirm hang height w/ Architect, prior to final installation. 3. EC to confirm finish w/ Architect/Interior Designer, prior to ordering. 4. EC to confirm ceiling type/mounting type, prior to ordering. 5. EC to confirm control system, and compatibility with driver prior to ordering.
PC-02-06'		Xico "Micro Square Pendant" Description: 1.4" Low-Profile 16" Linear Direct LED Pendant Mount	Specification: # MSQ140-P-16-MBK (CONFRM): E1-OFL-S80-30-DLAM-50-NN-NN-UNV-FD01-NN-NN-X_CRESTRON-T1/2/3 (EC TO COORDINATE)-RCBK2-S48BK Approved Equals: Starfire, Axis Lighting: LED (Integral) Wattage (W): 6 Wf Output (lm): 500 lm f CCT (K): 3000K CRI: 80 Dimming Protocol: 0-10V to 1% Voltage (V): 120-277V Distribution: Lambertian Label/IP: Dry Finish: Black (Architect to Confirm) Location: Central Spine, Levels Garden, 1 & 2	1. EC to verify voltage (prior to ordering). 2. EC to confirm hang height w/ Architect, prior to final installation. 3. EC to confirm finish w/ Architect/Interior Designer, prior to ordering. 4. EC to confirm ceiling type/mounting type, prior to ordering. 5. EC to confirm control system, and compatibility with driver prior to ordering.

Lumen Studio, a Green International Affiliates Company 100 Ames Pond Drive, Suite 200, Tewksbury, Massachusetts 01876

Code/Tag	Image	Product / Manufacturer	Attributes	Notes
PC-02-08'		Xico "Micro Square Pendant" Description: 1.4" Low-Profile 8" Linear Direct LED Pendant Mount	Specification: # MSQ140-P-8-MBK (CONFRM): E1-OFL-S80-30-DLAM-50-NN-NN-UNV-FD01-NN-NN-X_CRESTRON-T1/2/3 (EC TO COORDINATE)-RCBK2-S48BK Approved Equals: Starfire, Axis Lighting: LED (Integral) Wattage (W): 6 Wf Output (lm): 500 lm f CCT (K): 3000K CRI: 80 Dimming Protocol: 0-10V to 1% Voltage (V): 120-277V Distribution: Lambertian Label/IP: Dry Finish: Black (Architect to Confirm) Location: Level 1 Stacks, YA Areas	1. EC to verify voltage (prior to ordering). 2. EC to confirm hang height w/ Architect, prior to final installation. 3. EC to confirm finish w/ Architect/Interior Designer, prior to ordering. 4. EC to confirm ceiling type/mounting type, prior to ordering. 5. EC to confirm control system, and compatibility with driver prior to ordering.
PC-02-12'		Xico "Micro Square Pendant" Description: 1.4" Low-Profile 12" Linear Direct LED Pendant Mount	Specification: # MSQ140-P-12-MBK (CONFRM): E1-OFL-S80-30-DLAM-50-NN-NN-UNV-FD01-NN-NN-X_CRESTRON-T1/2/3 (EC TO COORDINATE)-RCBK2-S48BK Approved Equals: Starfire, Axis Lighting: LED (Integral) Wattage (W): 6 Wf Output (lm): 500 lm f CCT (K): 3000K CRI: 80 Dimming Protocol: 0-10V to 1% Voltage (V): 120-277V Distribution: Lambertian Label/IP: Dry Finish: Black (Architect to Confirm) Location: Central Spine, Garden Level	1. EC to verify voltage (prior to ordering). 2. EC to confirm hang height w/ Architect, prior to final installation. 3. EC to confirm finish w/ Architect/Interior Designer, prior to ordering. 4. EC to confirm ceiling type/mounting type, prior to ordering. 5. EC to confirm control system, and compatibility with driver prior to ordering.
PC-02-16'		Xico "Micro Square Pendant" Description: 1.4" Low-Profile 16" Linear Direct LED Pendant Mount	Specification: # MSQ140-P-16-MBK (CONFRM): E1-OFL-S80-30-DLAM-50-NN-NN-UNV-FD01-NN-NN-X_CRESTRON-T1/2/3 (EC TO COORDINATE)-RCBK2-S48BK Approved Equals: Starfire, Axis Lighting: LED (Integral) Wattage (W): 6 Wf Output (lm): 500 lm f CCT (K): 3000K CRI: 80 Dimming Protocol: 0-10V to 1% Voltage (V): 120-277V Distribution: Lambertian Label/IP: Dry Finish: Black (Architect to Confirm) Location: Central Spine, Level 1	1. EC to verify voltage (prior to ordering). 2. EC to confirm hang height w/ Architect, prior to final installation. 3. EC to confirm finish w/ Architect/Interior Designer, prior to ordering. 4. EC to confirm ceiling type/mounting type, prior to ordering. 5. EC to confirm control system, and compatibility with driver prior to ordering.

Lumen Studio, a Green International Affiliates Company 100 Ames Pond Drive, Suite 200, Tewksbury, Massachusetts 01876

Code/Tag	Image	Product / Manufacturer	Attributes	Notes
PC-03-08'		Xico "Micro Square Pendant" Description: 1.4" Low-Profile 8" Linear Direct LED Pendant Mount	Specification: # MSQ140-P-8-MWH (CONFRM): E1-OFL-S80-30-DLAM-75-NN-NN-UNV-FD01-NN-NN-X_CRESTRON-T1/2/3 (EC TO COORDINATE)-RCWH2-S48WH Approved Equals: Starfire, Axis Lighting: LED (Integral) Wattage (W): 9 Wf (72 W Total) Output (lm): 750 lm f (6000 lm Total) CCT (K): 3000K CRI: 80 Dimming Protocol: 0-10V to 1% Voltage (V): 120-277V Distribution: Lambertian Label/IP: Dry Finish: White (Architect to Confirm) Location: Level 1 Stacks, YA Areas	1. EC to verify voltage (prior to ordering). 2. EC to confirm hang height w/ Architect, prior to final installation. 3. EC to confirm finish w/ Architect/Interior Designer, prior to ordering. 4. EC to confirm ceiling type/mounting type, prior to ordering. 5. EC to confirm control system, and compatibility with driver prior to ordering.
PC-03-12'		Xico "Micro Square Pendant" Description: 1.4" Low-Profile 12" Linear Direct LED Pendant Mount	Specification: # MSQ140-P-12-MWH (CONFRM): E1-OFL-S80-30-DLAM-75-NN-NN-UNV-FD01-NN-NN-X_CRESTRON-T1/2/3 (EC TO COORDINATE)-RCWH2-S48WH Approved Equals: Starfire, Axis Lighting: LED (Integral) Wattage (W): 9 Wf (72 W Total) Output (lm): 750 lm f (6000 lm Total) CCT (K): 3000K CRI: 80 Dimming Protocol: 0-10V to 1% Voltage (V): 120-277V Distribution: Lambertian Label/IP: Dry Finish: White (Architect to Confirm) Location: Level 2 Stacks (Adult Notification)	1. EC to verify voltage (prior to ordering). 2. EC to confirm hang height w/ Architect, prior to final installation. 3. EC to confirm finish w/ Architect/Interior Designer, prior to ordering. 4. EC to confirm ceiling type/mounting type, prior to ordering. 5. EC to confirm control system, and compatibility with driver prior to ordering.
PC-03-16'		Xico "Micro Square Pendant" Description: 1.4" Low-Profile 16" Linear Direct LED Pendant Mount	Specification: # MSQ140-P-16-MWH (CONFRM): E1-OFL-S80-30-DLAM-75-NN-NN-UNV-FD01-NN-NN-X_CRESTRON-T1/2/3 (EC TO COORDINATE)-RCWH2-S48WH Approved Equals: Starfire, Axis Lighting: LED (Integral) Wattage (W): 9 Wf (72 W Total) Output (lm): 750 lm f (6000 lm Total) CCT (K): 3000K CRI: 80 Dimming Protocol: 0-10V to 1% Voltage (V): 120-277V Distribution: Lambertian Label/IP: Dry Finish: White (Architect to Confirm) Location: Level 1 Stacks	1. EC to verify voltage (prior to ordering). 2. EC to confirm hang height w/ Architect, prior to final installation. 3. EC to confirm finish w/ Architect/Interior Designer, prior to ordering. 4. EC to confirm ceiling type/mounting type, prior to ordering. 5. EC to confirm control system, and compatibility with driver prior to ordering.

Lumen Studio, a Green International Affiliates Company 100 Ames Pond Drive, Suite 200, Tewksbury, Massachusetts 01876

Code/Tag	Image	Product / Manufacturer	Attributes	Notes
PC-03-20'		Xico "Micro Square Pendant" Description: 1.4" Low-Profile 20" Linear Direct LED Pendant Mount	Specification: # MSQ140-P-20-FINSH (CONFRM): E1-OFL-S80-30-DLAM-75-NN-NN-UNV-FD01-NN-NN-X_CRESTRON-T1/2/3 (EC TO COORDINATE)-RCWH2-S48WH Approved Equals: Starfire, Axis Lighting: LED (Integral) Wattage (W): 9 Wf (180 W Total) Output (lm): 750 lm f (15,000 lm Total) CCT (K): 3000K CRI: 80 Dimming Protocol: 0-10V to 1% Voltage (V): 120-277V Distribution: Lambertian Label/IP: Dry Finish: White (Architect to Confirm) Location: Level 1 Stacks	1. EC to verify voltage (prior to ordering). 2. EC to confirm hang height w/ Architect, prior to final installation. 3. EC to confirm finish w/ Architect/Interior Designer, prior to ordering. 4. EC to confirm ceiling type/mounting type, prior to ordering. 5. EC to confirm control system, and compatibility with driver prior to ordering.
PC-04		Axis Lighting "Chime Taper 18" Description: 18" Long Decorative LED Downlight	Specification: # CTPD-1.5-MB-90-30-NIP-UNV-OP-SCR-MOUNTING-TBD-FINSH Approved Equals: OCL, LumenArt, Sonneman Lamping: LED (Integral) Wattage (W): 20w Output (lm): 1824LM CCT (K): 3000K CRI: 50 Dimming Protocol: 0-10V to 1% Voltage (V): 120-277V Finish: TBD Hang Height (AFF): TBD Location: Circulation Desks, Level 1	1. EC to verify voltage (prior to ordering). 2. EC to confirm hang height w/ Architect, prior to final installation. 3. EC to confirm finish w/ Architect/Interior Designer, prior to ordering.
PC-05		Alphabet Lighting "Beta 4" Description: 4" diameter pendant-mounted cylinder downlight.	Specification: # BETA-4R-SW-15LM-30K-80-HE40-HCL-8K (CONFRM)-BK (CONFRM)-PL-UNV-DN10-(BY EE) Approved Equals: CSL, Cortech Lamping: LED (Integral) Wattage (W): 14W Output (lm): 1520 lm CCT (K): 3000K CRI: 80 Dimming Protocol: 0-10V to 1% Voltage (V): 120-277V Distribution: 40 degree diffuse lens Label/IP: Damp Finish: Black w/Black Bezel (Architect to Confirm) Location: Corridors & Central Spine	1. EC to verify voltage (prior to ordering). 2. EC to confirm hang height w/ Architect, prior to final installation. 3. EC to confirm finish w/ Architect/Interior Designer, prior to ordering.

Lumen Studio, a Green International Affiliates Company 100 Ames Pond Drive, Suite 200, Tewksbury, Massachusetts 01876

Code/Tag	Image	Product / Manufacturer	Attributes	Notes
PC-06A & B		Axis Lighting "Sketch" Description: Semi-curved direct LED pendant to be mounted in coordination with acoustical ceiling panels.	Specification: # SKPE-DIAMETER TBD-SL1100-ARC-AL-LENGTH-700-80-30-FINSH-UNV-DP Approved Equals: OCL, Edison Lamping: LED (Integral) Wattage (W): 7 Wf Output (lm): 700 lm f CCT (K): 3000K CRI: 80 Dimming Protocol: 0-10V Voltage (V): UNV Finish: TBD (Architect to Confirm) Hang Height (AFF): Bottom of Fixture Aligns with Bottom of Acoustical Panel (Architect to Confirm) Location: Youth Area, 1st Fl	1. EC to verify voltage (prior to ordering). 2. EC to confirm hang height w/ Architect, prior to final installation. 3. EC to confirm finish w/ Architect/Interior Designer, prior to ordering.
PC-07		OCL Lighting "Neo" Description: Large-scale decorative LED pendant.	Specification: Neo # NE1-PIFF (EC TO CONFIRM)-W (CONFRM): 36-MW-MWP (CONFRM)-LED1-30K-UNV-OAH-TBD-DM1 Approved Equals: Brownlee, Lumetta Lamping: LED (Integral) Wattage (W): 59W Output (lm): 6300 lm CCT (K): 3000K CRI: 80 Dimming Protocol: 0-10V Voltage (V): UNV Finish: White (Architect to Confirm) Hang Height (AFF): TBD (Architect to Confirm) Location: Double Height Adult Reading Room	1. EC to verify voltage (prior to ordering). 2. EC to confirm hang height w/ Architect, prior to final installation. 3. EC to confirm finish w/ Architect/Interior Designer, prior to ordering.
PC-08		OCL Lighting "Glowball Diverge 14" Description: Decorative multi-drop LED pendant.	Specification: # GB1-PC14+CORD-COLOR-T17-F50FINSH-LED1-30K-UNV-VOLTS-DMD Approved Equals: Hubbardton Forge, Sonneman Lamping: LED (Integral) Wattage (W): 70W (System, not per drop) Output (lm): 4900lm CCT (K): 3000K CRI: 80 Dimming Protocol: 0-10V Voltage (V): UNV Finish: TBD (Architect to Confirm) Hang Height (AFF): TBD (Architect to Confirm) Location: Over Stairs	1. EC to verify voltage (prior to ordering). 2. EC to confirm hang height w/ Architect, prior to final installation. Pendants will hang at differing heights over the stairs. Final location to be coordinated in the field with Architect/Interior Designer. 3. EC to confirm finish w/ Architect/Interior Designer, prior to ordering.

Lumen Studio, a Green International Affiliates Company 100 Ames Pond Drive, Suite 200, Tewksbury, Massachusetts 01876

Code/Tag	Image	Product / Manufacturer	Attributes	Notes
PC-09		OCL Lighting "Ribbed Glass" Description: Decorative LED glass globe pendant.	Specification: RB1-PIFF-W(TBD)-12-MWP(TBD)-LED1-30K-UNV-100-DM1 Approved Equals: Sonneman, J'ac Lamping: LED (Integral) Wattage (W): 15W Output (lm): 750m CCT (K): 3,000K CRI: 80 Dimming Protocol: 0-10V Voltage (V): 120-277V Finish: White (Architect to Confirm) Hang Height (AFF): TBD (Architect to Confirm) Location: 2nd/3rd Floor Double-Height Corridor, Youth	1. EC to verify voltage (prior to ordering). 2. EC to confirm hang height w/ Architect, prior to final installation. 3. EC to confirm finish w/ Architect/Interior Designer, prior to ordering.
PC-12		Metalux "Cruz ST" Description: Pendant-mounted LED 2x2 Troffer	Specification: # 22C22-32-UNV-EMERGENCY BY EE-L830-HCD-1 Approved Equals: Metalumen, Lithonia Pendant Mount Kit: # SK-22-W5-Pendant Mount Lamping: LED (Integral) Wattage (W): 24W Output (lm): 3200 lm CCT (K): 3000K CRI: 80 Dimming Protocol: 0-10V Voltage (V): 120-277V Label/IP: Damp Location: BOH	1. EC to verify voltage (prior to ordering). 2. EC to verify ceiling type (prior to ordering).
RB-1		Xico Lighting "Microflair" Description: 1.4" Low-Profile Linear LED Flat Rail	Specification: # MFL140-LENGTH PER PLAN-MWH-E1-OFT-S80-30-LAM-35-UNV-FD01-NN-RDDB-CONTROL-TBD-SM-DN-POWER-CORD-PLUG Approved Equals: O-Tran, Ecospense Lamping: LED (Integral) Wattage (W): 4 Wf Output (lm): 350 lm f CCT (K): 3000K CRI: 80 Dimming Protocol: 0-10V Voltage (V): 120-277V Finish: White Location: Above Acoustical Panels YA	1. EC to verify voltage (prior to ordering).
RC-1		Liteline "Edge 2x2" Description: 2x2 30w LED Recessed Perimeter Fixture	RC-1 Specification: # EDGE-22-W-GRID-TYPE-DRIVER-30-3-120-277 Approved Equals: Axis, Pure Edge Lamping: LED (Integral) Wattage (W): 30W Output (lm): 3100lm CCT (K): 3000K CRI: 80 Dimming Protocol: 0-10V to 1% Voltage (V): 120-277V Label/IP: Indoor Location: Throughout	1. EC to verify voltage (prior to ordering). 2. EC to verify ceiling type (prior to ordering).

Lumen Studio, a Green International Affiliates Company 100 Ames Pond Drive, Suite 200, Tewksbury, Massachusetts 01876

Code/Tag	Image	Product / Manufacturer	Attributes	Notes
RC-1A		Liteline "Edge 2x2" Description: 2x2 20w LED Recessed Perimeter Fixture	RC-1A Specification: # EDGE-22-W-GRID-TYPE-DRIVER-30-2-120-277 Approved Equals: Axis, Pure Edge Lamping: LED (Integral) Wattage (W): 20W Output (lm): 2100lm CCT (K): 3000K CRI: 80 Dimming Protocol: 0-10V to 1% Voltage (V): 120-277V Label/IP: Indoor Location: Garden Level Offices/Reading Rooms	1. EC to verify voltage (prior to ordering). 2. EC to verify ceiling type (prior to ordering).
RC-2		Alphabet Lighting "NUALOPRO" Description: Shallow-profile 4" diameter recessed LED downlight (ACT Cfg).	Specification: # NUJ-RDLP-SW-15LM-30K-80-HE60-WH-MC-RET (CONFRM)-UNV-DIM10 Approved Equals: Intense, CSL Lamping: LED (Integral) Wattage (W): 14W Output (lm): 1200lm CCT (K): 3000K CRI: 80 Dimming Protocol: 0-10V to 1% Voltage (V): UNV Distribution: 60° Label/IP: Damp Finish: White Trim with Matte Chrome Bezel (Architect to Confirm) Location: Throughout (ACT Ceiling)	1. EC to verify voltage (prior to ordering). 2. EC to verify trim finish (prior to ordering). 3. EC to coordinate Mounting Type (currently specified as Retrofit) (prior to ordering).
RC-2A		Alphabet Lighting "NUALOPRO" Description: Shallow-profile 4" diameter recessed LED downlight (GWB Cfg).	Specification: # NUJ-RDLP-SW-15LM-30K-80-HE60-WH-MC-RET (CONFRM)-UNV-DIM10 Approved Equals: Intense, CSL Lamping: LED (Integral) Wattage (W): 14W Output (lm): 1200lm CCT (K): 3000K CRI: 80 Dimming Protocol: 0-10V to 1% Voltage (V): UNV Distribution: 60° Label/IP: Damp Finish: White Trim with Matte Chrome Bezel (Architect to Confirm) Location: Throughout (GWB Ceiling)	1. EC to verify voltage (prior to ordering). 2. EC to verify trim finish (prior to ordering). 3. EC to coordinate Mounting Type (currently specified as Retrofit) (prior to ordering). 4. GC to paint out trim, to match ceiling in which installed.

Lumen Studio, a Green International Affiliates Company 100 Ames Pond Drive, Suite 200, Tewksbury, Massachusetts 01876

Code/Tag	Image	Product / Manufacturer	Attributes	Notes
RC-2B		Alphabet Lighting "NUALOPRO" Description: Shallow-profile 4" diameter recessed LED wallwasher	Specification: NUJ-RWLP-SW-15LM-30K-80-WH-MC-RET (CONFRM)-UNV-DIM10 Approved Equals: Intense, CSL Lamping: LED (Integral) Wattage (W): 12W Output (lm): 1100lm CCT (K): 3,000K CRI: 80 Dimming Protocol: 0-10V Voltage (V): UNV Distribution: Wall Wash Label/IP: Wet Finish: White Trim with Matte Chrome Bezel (Architect to Confirm) Location: Throughout ACT & Gyp Ceiling	1. EC to verify voltage (prior to ordering). 2. EC to verify trim finish (prior to ordering). 3. EC to coordinate Mounting Type (currently specified as Retrofit) (prior to ordering). 4. GC to paint out trim, to match ceiling in which installed in gypsum ceiling condition.
RC-3		Metalux "Cruz ST" Description: Recess LED 2x2 Troffer (ACT Cfg)	Specification: # 22C22-32-UNV-EMERGENCY BY EE-L830-HCD-1 Approved Equals: Metalumen, Lithonia Lamping: LED (Integral) Wattage (W): 24W Output (lm): 3200 lm CCT (K): 3000K CRI: 80 Dimming Protocol: 0-10V Voltage (V): 120-277V Label/IP: Damp Location: Throughout (ACT Ceiling)	1. EC to verify voltage (prior to ordering). 2. EC to verify ceiling type (prior to ordering).
RC-3A		Metalux "Cruz ST" Description: Recess LED 2x4 Troffer (ACT Cfg)	Specification: # 24C22-65-UNV-EMERGENCY BY EE-L830-HCD-1 Approved Equals: Metalumen, Lithonia Lamping: LED (Integral) Wattage (W): 42W Output (lm): 5000m CCT (K): 3000K CRI: 80 Dimming Protocol: 0-10V Voltage (V): 120-277V Label/IP: Damp Location: Throughout (ACT Ceiling)	1. EC to verify voltage (prior to ordering). 2. EC to verify ceiling type (prior to ordering).
RC-3B		Metalux "Cruz ST" Description: Recess LED 2x2 Troffer (GWB Cfg).	Specification: # 22C22-32-UNV-EMERGENCY BY EE-L830-HCD-1 Approved Equals: Metalumen, Lithonia Lamping: LED (Integral) Wattage (W): 24W Output (lm): 3200 lm CCT (K): 3000K CRI: 80 Dimming Protocol: 0-10V Voltage (V): 120-277V Label/IP: Damp Location: Throughout (GWB Ceiling)	1. EC to verify voltage (prior to ordering). 2. EC to verify ceiling type (prior to ordering).

Lumen Studio, a Green International Affiliates Company 100 Ames Pond Drive, Suite 200, Tewksbury, Massachusetts 01876

Finegold Alexander Architects

PROJECT TEAM:

OWNER:
Jones Library

Structural Engineer:
RSE Associates, Inc.
63 Pleasant Street, Suite 200
Watertown, MA 02474
(617) 926-9300
www.rseassociates.com

MEP/FP Engineer:
BLW Engineers, Inc.
311 Great Road
Littleton, MA 01460
(978) 466-4301
www.blwengineers.com

Landscape Architect/Civil Engineer:
Barkshire Design Group
4 Allen Place
Northampton, MA 01060
(413) 582-7000
www.barkshiredesign.com

Interior Designer:
Stefura Associates, Inc.
77 N. Washington Street
Boston, MA 02114
(617) 723-5164
www.stefura.com

Specifications Consultant:
Mark T. Wilhelm
10 Doaks Lane
Marblehead, MA 01945
(781) 639-8339

Code Consultant:
Hastings Consulting, Inc.
142 Hanlon Road
Holliston, MA 01746
(508) 597-8417
www.hastings-consulting.com

Acoustical Consultant:
Acetech
33 Moulton Street
Cambridge, MA 02138
(617) 498-8000

Lighting Consultant:
Green International Affiliates, INC
100 Ames Pond Dr.
Tewksbury, MA 01876
(978) 923-0400
greenintl.com

KEY PLAN:

SEAL:

PROJECT INFORMATION:
Jones Library
43 Amity Street
Amherst, MA 01002
PROJECT # P0269.00
ISSUE DATE: 1/10/24
PROJECT STATUS: Bid Set
DRAWN BY: YLZ
CHECKED BY: CLA

SHEET NAME:
Lighting Schedule
1

DRAWING HISTORY:
NO. DATE DESCRIPTION
1 02/06/24 Addendum 01

SHEET #:
LS05

Notes - General Ceiling Plan

- GC1 Ceiling Tags Denote Elevations Off The Finished Floor Of That Respective Room. Refer To Plans For Floor Elevations
- GC2 Provide Manual Roller Shades At All Exterior Glazing Except For Multi-Story Curtain Wall As Tagged On The Reflected Ceiling Plans And Based On The Following Types:
- GC3 Security Cameras As Indicated Shall Be Priced As Hanwha QN-8010R For 75% Cds.
- GC4 At Locations Of Demolished Plaster Ceiling, Install 5/8" Gyp. Ceiling On 1/2" Furring Strips & Shims Attached To Existing Structure. Determine Ceiling Height In Field With Architect & Caulk Between Gyp. Ceiling & Existing Crown Molding
- GC5 At Locations Of Existing Plaster Crown Molding, Determine Ceiling Height In Field With Architect & Caulk Between Gyp. Ceiling & Existing Crown Molding

Notes - Ceiling Plan

- C01 Scribe Gyp. @ Partition To Existing Plaster Crown Molding, Caulk Between Gyp. & Plaster Crown Molding

RCP - Graphic Key

- ACT (Acoustical Ceiling Tile - 2 x 2)
- ACT (Acoustical Ceiling Tile - 2 x 5)
- GWB (Gypsum Ceiling)
- ABC (Acoustic Baffle Ceiling)
- ACC (Acoustic Circular Canopy)
- Acoustic Panelized Ceiling
- Roller Shades RS-1, RS-2, RS-3
- RS-4 Roller Shades With Blackout Shade
- Exit Sign
- Sprinkler-Fully Recessed 1/2" Pendant on Drop
- Sprinkler-Side Wall
- Smoke Detector
- Security Camera
- Wall Mounted Fire Alarm
- Square Supply Diffuser
- Wireless Access Point
- Clock

For Light Fixture Information, Refer to Electrical Drawings and Lighting Consultant Schedule

- Light Fixture - Linear Pendant
- Light Fixture - Decorative Downlight
- Light Fixture - Pendant Downlight
- Light Fixture - Large Scale Decorative Pendant
- Light Fixture - Decorative Multi-Drop Pendant
- Light Fixture - Decorative Glass Globe Pendant
- Light Fixture - Pendant Mounted 2x2 Troffer
- Light Fixture - Low Profile Linear Flat Rail
- Light Fixture - 2x2 Recessed Perimeter Fixture
- Light Fixture - Shallow Profile 4" Diameter Recessed Downlight
- Light Fixture - Shallow Profile 4" Diameter Recessed Wall Washer
- Light Fixture - 2x4 Recessed Troffer
- Light Fixture - Recessed Linear
- Light Fixture - Edge Lit Linear T-Bar Mount
- Light Fixture - Pinhole Downlight
- Light Fixture - Linear Surface-Mounted
- Light Fixture - Decorative Surface-Mounted
- Light Fixture - Small Scale Monopoint Mounted Wall Washer
- Light Fixture - Surface Mounted 2x2 Troffer
- Light Fixture - Wall Mounted Strip Light
- Light Fixture - Small Profile Wall Mounted Linear
- Light Fixture - Linear Vanity Sconce
- Light Fixture - Decorative Historic Sconce
- Light Fixture - LED Track Light & Track

KEY PLAN:

SEAL:

PROJECT INFORMATION:

Jones Library
 43 Amity Street
 Amherst, MA 01002
 PROJECT #: P0269.00
 ISSUE DATE: January 10, 2024
 PROJECT STATUS: Bid Documents
 DRAWN BY: DL
 CHECKED BY: DW

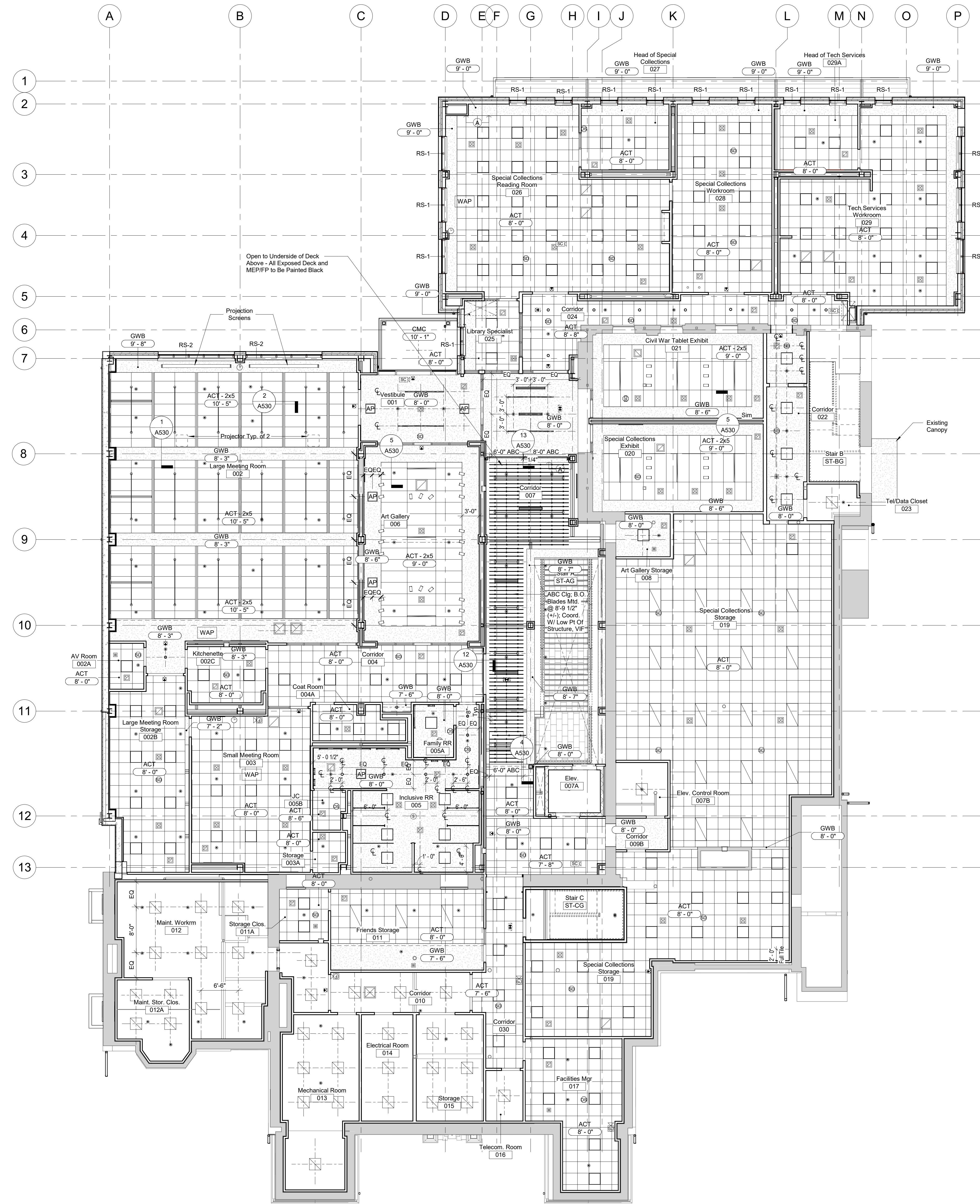
SHEET NAME:
Reflected Ceiling Plan - Garden Level

DRAWING HISTORY:

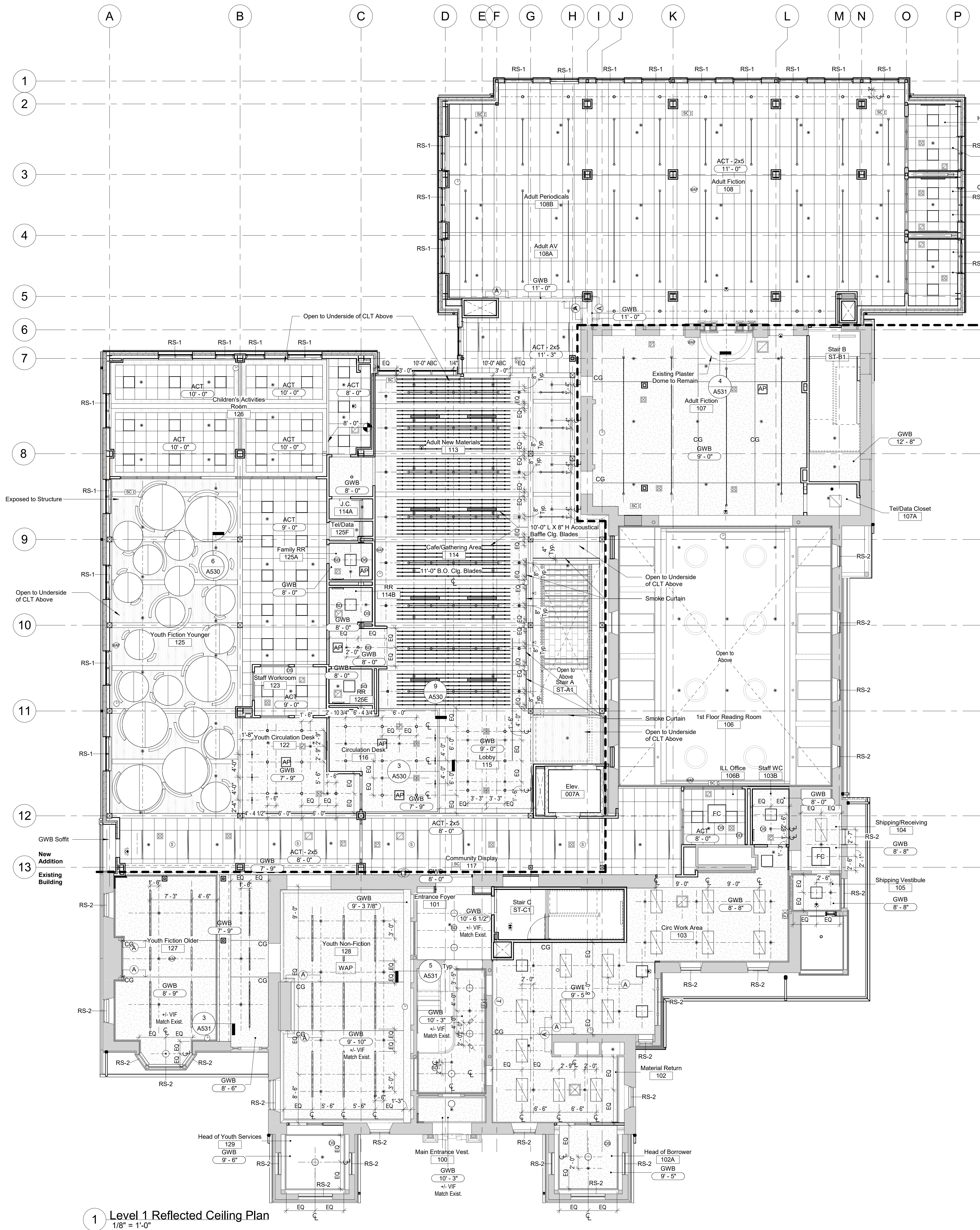
NO.	DATE	DESCRIPTION
1	02/06/24	Addendum 01

SHEET #:

A120



1 Garden Level Reflected Ceiling Plan
 1/8" = 1'-0"



1 Level 1 Reflected Ceiling Plan
1/8" = 1'-0"

Notes - General Ceiling Plan

- GC1 Ceiling Tags Denote Elevations Off The Finished Floor Of That Respective Room. Refer To Plans For Floor Elevations
- GC2 Provide Manual Roller Shades At All Exterior Glazing Except For Multi-Story Curtain Wall As Tagged On The Reflected Ceiling Plans And Based On The Following Types:
- GC3 Security Cameras As Indicated Shall Be Priced As Hanwha QN-8010R For 75% Cds.
- GC4 At Locations Of Demolished Plaster Ceiling, Install 5/8" Gyp. Ceiling On 1/2" Furring Strips & Shims Attached To Existing Structure. Determine Ceiling Height In Field With Architect & Caulk Between Gyp. Ceiling & Existing Crown Molding
- GC5 At Locations Of Existing Plaster Crown Molding, Determine Ceiling Height In Field With Architect & Caulk Between Gyp. Ceiling & Existing Crown Molding

Notes - Ceiling Plan

- C01 Scribe Gyp. @ Partition To Existing Plaster Crown Molding. Caulk Between Gyp. & Plaster Crown Molding

RCP - Graphic Key

- ACT (Acoustical Ceiling Tile - 2 x 2)
- ACT (Acoustical Ceiling Tile - 2 x 5)
- GWB (Gypsum Ceiling)
- ABC (Acoustic Baffle Ceiling)
- ACC (Acoustic Circular Canopy)
- Acoustic Panelized Ceiling
- Roller Shades RS-1, RS-2, RS-3
- Roller Shades With Blackout Shade RS-4
- Exit Sign
- Sprinkler-Fully Recessed 1/2" Pendant on Drop
- Sprinkler-Side Wall
- Smoke Detector
- Security Camera
- Wall Mounted Fire Alarm
- Square Supply Diffuser
- Wireless Access Point
- Clock

For Light Fixture Information, Refer to Electrical Drawings and Lighting Consultant Schedule

- Light Fixture - Linear Pendant
- Light Fixture - Decorative Downlight
- Light Fixture - Pendant Downlight
- Light Fixture - Large Scale Decorative Pendant
- Light Fixture - Decorative Multi-Drop Pendant
- Light Fixture - Decorative Glass Globe Pendant
- Light Fixture - Pendant Mounted 2x2 Troffer
- Light Fixture - Low Profile Linear Flat Rail
- Light Fixture - 2x2 Recessed Perimeter Fixture
- Light Fixture - Shallow Profile 4" Diameter Recessed Downlight
- Light Fixture - Shallow Profile 4" Diameter Recessed Wall Washer
- Light Fixture - 2x4 Recessed Troffer
- Light Fixture - Recessed Linear
- Light Fixture - Edge Lit Linear T-Bar Mount
- Light Fixture - Pinhole Downlight
- Light Fixture - Linear Surface-Mounted
- Light Fixture - Decorative Surface-Mounted
- Light Fixture - Small Scale Monopoint Mounted Wall Washer
- Light Fixture - Surface Mounted 2x2 Troffer
- Light Fixture - Wall Mounted Strip Light
- Light Fixture - Small Profile Wall Mounted Linear
- Light Fixture - Linear Vanity Sconce
- Light Fixture - Decorative Historic Sconce
- Light Fixture - LED Track Light & Track

PROJECT TEAM:

OWNER:
Jones Library
43 Amity Street
Amherst, MA 01002

Structural Engineer:
RSE Associates, Inc.
63 Pleasant Street, Suite 200
Watertown, MA 02472
(617) 926-9300
www.rseassociates.com

MEP PP Engineer:
BLW Engineers, Inc.
311 Great Road
Littleton, MA 01460
(978) 486-4301
www.blwengineers.com

Landscape Architect/Civil Engineer:
Barkshire Design Group
4 Allen Place
Northampton, MA 01060
(413) 582-7000
www.barkshiredesign.com

Interior Design:
Stefira Associates, Inc.
77 N. Washington Street
Boston, MA 02114
(617) 723-5164
www.stefira.com

Specifications Consultant:
Mark T. Wilhelm
10 Doaks Lane
Marblehead, MA 01945
(781) 639-8339

Code Consultant:
Hastings Consulting, Inc.
142 Hanlon Road
Holliston, MA 01746
(508) 397-5417
www.hastings-consulting.com

Acoustical Consultant:
Acotech
33 Moulton Street
Cambridge, MA 02138
(617) 498-9000

KEY PLAN:

SEAL:

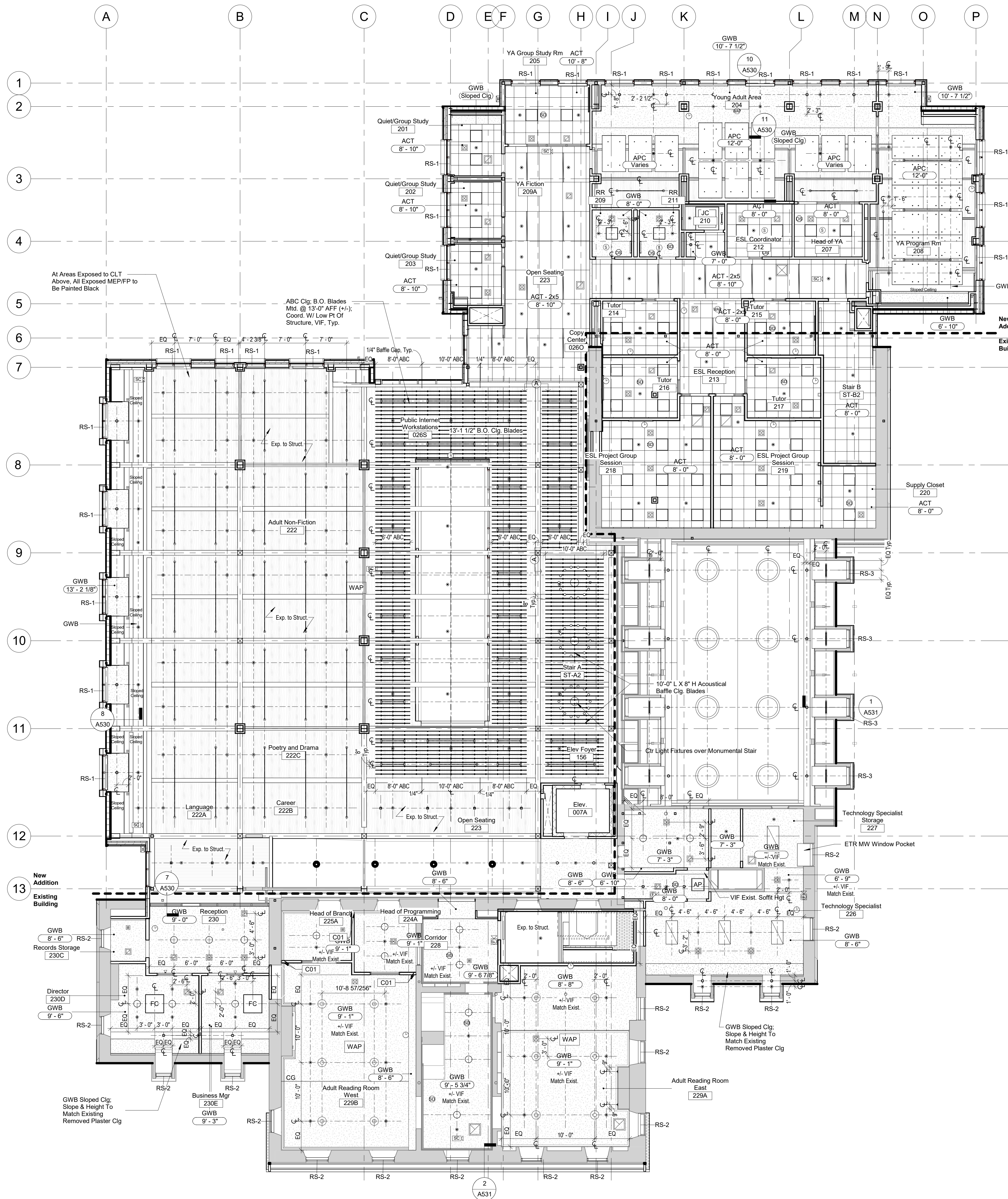
PROJECT INFORMATION:

Jones Library
43 Amity Street
Amherst, MA 01002
PROJECT #: P0269.00
ISSUE DATE: January 10, 2024
PROJECT STATUS: Bld Documents
DRAWN BY: DL
CHECKED BY: DW

SHEET NAME:
Reflected Ceiling Plan - Level 1

DRAWING HISTORY:

NO.	DATE	DESCRIPTION
1	02/06/24	Addendum 01



1 Level 2 Reflected Ceiling Plan
1/8" = 1'-0"

Notes - General Ceiling Plan

- GC1 Ceiling Tags Denote Elevations Off The Finished Floor Of That Respective Room. Refer To Plans For Floor Elevations
- GC2 Provide Manual Roller Shades At All Exterior Glazing Except For Multi-Story Curtain Wall As Tagged On The Reflected Ceiling Plans And Based On The Following Types:
- GC3 Security Cameras As Indicated Shall Be Priced As Hanwha QN-8010R For 75% Cds.
- GC4 At Locations Of Demolished Plaster Ceiling, Install 5/8" Gyp. Ceiling On 1/2" Furring Strips & Shims Attached To Existing Structure. Determine Ceiling Height In Field With Architect & Caulk Between Gyp. Ceiling & Existing Crown Molding
- GC5 At Locations Of Existing Plaster Crown Molding, Determine Ceiling Height In Field With Architect & Caulk Between Gyp. Ceiling & Existing Crown Molding

Notes - Ceiling Plan

- CO1 Scribe Gyp. @ Partition To Existing Plaster Crown Molding, Caulk Between Gyp. & Plaster Crown Molding

RCP - Graphic Key

- ACT (Acoustical Ceiling Tile - 2 x 2)
- ACT (Acoustical Ceiling Tile - 2 x 5)
- GWB (Gypsum Ceiling)
- ABC (Acoustic Baffle Ceiling)
- ACC (Acoustical Circular Canopy)
- Acoustic Panelized Ceiling
- Roller Shades RS-1, RS-2, RS-3
- RS-4 Roller Shades With Blackout Shade
- Exit Sign
- Sprinkler-Fully Recessed 1/2" Pendant on Drop
- Sprinkler-Side Wall
- Smoke Detector
- Security Camera
- Wall Mounted Fire Alarm
- Square Supply Diffuser
- Wireless Access Point
- Clock

For Light Fixture Information, Refer to Electrical Drawings and Lighting Consultant Schedule

- Light Fixture - Linear Pendant
- Light Fixture - Decorative Downlight
- Light Fixture - Pendant Downlight
- Light Fixture - Large Scale Decorative Pendant
- Light Fixture - Decorative Multi-Drop Pendant
- Light Fixture - Decorative Glass Globe Pendant
- Light Fixture - Pendant Mounted 2x2 Troffer
- Light Fixture - Low Profile Linear Flat Rail
- Light Fixture - 2x2 Recessed Perimeter Fixture
- Light Fixture - Shallow Profile 4" Diameter Recessed Downlight
- Light Fixture - Shallow Profile 4" Diameter Recessed Wall Washer
- Light Fixture - 2x4 Recessed Troffer
- Light Fixture - Recessed Linear
- Light Fixture - Edge Lit Linear T-Bar Mount
- Light Fixture - Pinhole Downlight
- Light Fixture - Linear Surface-Mounted
- Light Fixture - Decorative Surface-Mounted
- Light Fixture - Decorative Surface-Mounted
- Light Fixture - Small Scale Monopoint Mounted Wall Washer
- Light Fixture - Surface Mounted 2x2 Troffer
- Light Fixture - Wall Mounted Strip Light
- Light Fixture - Small Profile Wall Mounted Decorative Pendant
- Light Fixture - Linear Vanity Sconce
- Light Fixture - Decorative Historic Sconce
- Light Fixture - LED Track Light & Track

Finegold Alexander Architects

PROJECT TEAM:
OWNER:
Jones Library
43 Amity Street
Amherst, MA 01002

Structural Engineer:
RSE Associates, Inc.
63 Pleasant Street, Suite 200
Watertown, MA 02472
(617) 926-9300
www.rseassociates.com

MEP/FP Engineer:
BLW Engineers, Inc.
311 Great Road
Littleton, MA 01460
(978) 486-4301
www.blwengineers.com

Landscape Architect/Civil Engineer:
Barkshire Design Group
4 Allen Place
Northampton, MA 01060
(413) 582-7000
www.barkshiredesign.com

Interior Design:
Stefura Associates, Inc.
77 N. Washington Street
Boston, MA 02114
(617) 723-5164
www.stefura.com

Specifications Consultant:
Mark T. Wilhelm
10 Doaks Lane
Marblehead, MA 01945
(781) 639-8339

Code Consultant:
Hastings Consulting, Inc.
142 Hanlon Road
Holliston, MA 01746
(508) 397-5417
www.hastings-consulting.com

Acoustical Consultant:
Acentech
33 Moulton Street
Cambridge, MA 02138
(617) 498-9000

KEY PLAN:

SEAL:

PROJECT INFORMATION:

Jones Library
43 Amity Street
Amherst, MA 01002
PROJECT #: P0269.00
ISSUE DATE: January 10, 2024
PROJECT STATUS: Bid Documents
DRAWN BY: DL
CHECKED BY: DW

SHEET NAME:

Level 2 Reflected Ceiling Plan - Level 2

DRAWING HISTORY:

NO.	DATE	DESCRIPTION
1	02/06/24	Addendum 01

SHEET #:

A122

Notes - General Ceiling Plan

- GC1 Ceiling Tags Denote Elevations Off The Finished Floor Of That Respective Room. Refer To Plans For Floor Elevations
- GC2 Provide Manual Roller Shades At All Exterior Glazing Except For Multi-Story Curtain Wall As Tagged On The Reflected Ceiling Plans And Based On The Following Types:
- GC3 Security Cameras As Indicated Shall Be Priced As Hanwha QN-8010R For 75% Cds.
- GC4 At Locations Of Demolished Plaster Ceiling, Install 5/8" Gyp. Ceiling On 1/2" Furring Strips & Shims Attached To Existing Structure. Determine Ceiling Height In Field With Architect & Caulk Between Gyp. Ceiling & Existing Crown Molding
- GC5 At Locations Of Existing Plaster Crown Molding, Determine Ceiling Height In Field With Architect & Caulk Between Gyp. Ceiling & Existing Crown Molding

Notes - Ceiling Plan

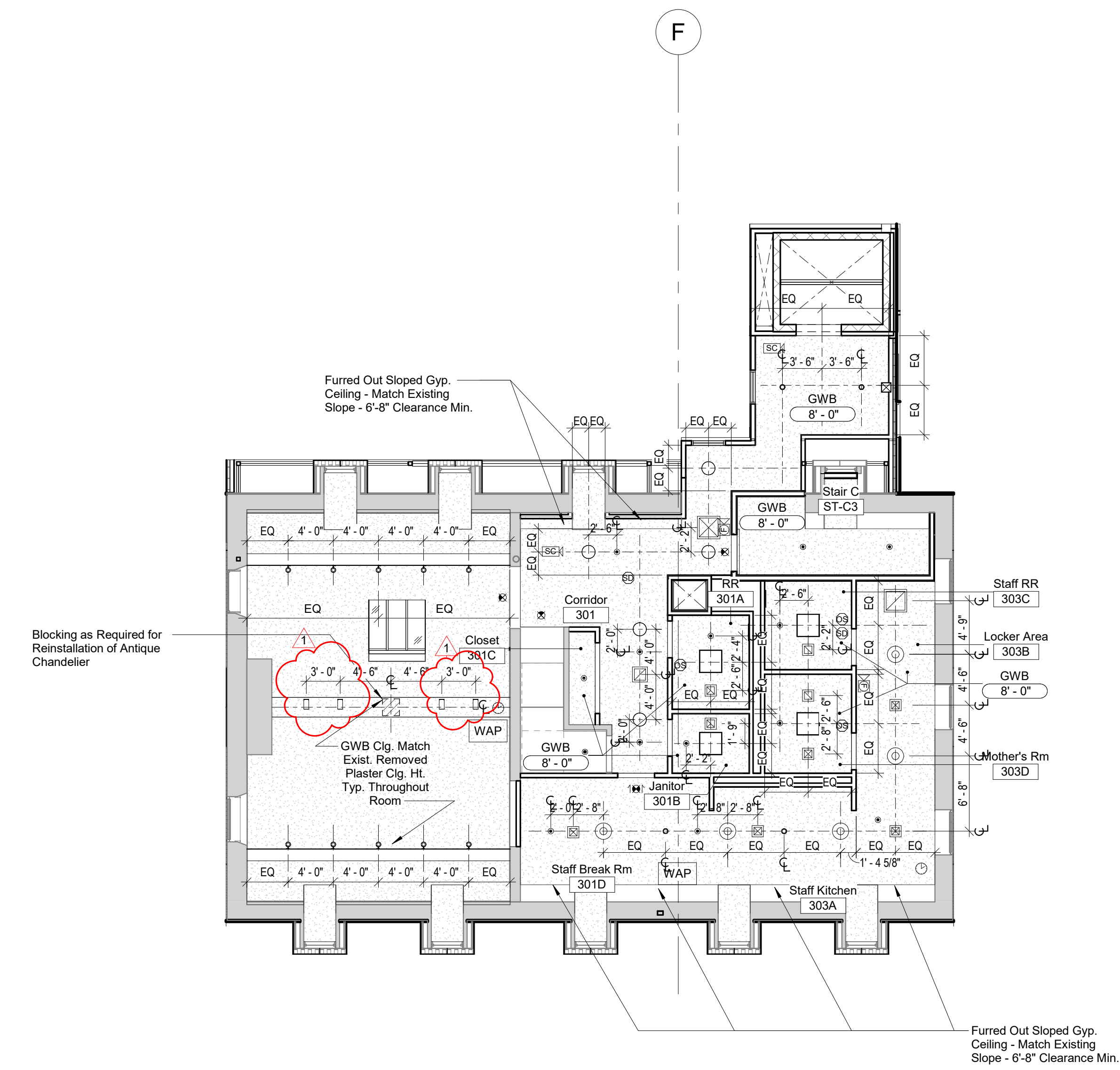
- C01 Scribe Gyp. @ Partition To Existing Plaster Crown Molding. Caulk Between Gyp. & Plaster Crown Molding

RCP - Graphic Key

- ACT (Acoustical Ceiling Tile - 2 x 2)
- ACT (Acoustical Ceiling Tile - 2 x 5)
- GWB (Gypsum Ceiling)
- ABC (Acoustic Baffle Ceiling)
- ACC (Acoustic Circular Canopy)
- Acoustic Panelized Ceiling
- Roller Shades RS-1, RS-2, RS-3
- RS-4 Roller Shades With Blackout Shade
- Exit Sign
- Sprinkler-Fully Recessed 1/2" Pendant on Drop
- Sprinkler-Side Wall
- Smoke Detector
- Security Camera
- Wall Mounted Fire Alarm
- Square Supply Diffuser
- Wireless Access Point
- Clock

For Light Fixture Information, Refer to Electrical Drawings and Lighting Consultant Schedule

Light Fixture - Linear Pendant	Light Fixture - Small Scale Monopoint Mounted Wall Washer
Light Fixture - Decorative Downlight	Light Fixture - Surface Mounted 2x2 Troffer
Light Fixture - Pendant Downlight	Light Fixture - Wall Mounted Strip Light
Light Fixture - Large Scale Decorative Pendant	Light Fixture - Small Profile Wall Mounted Linear
Light Fixture - Decorative Multi-Drop Pendant	Light Fixture - Linear Vanity Sconce
Light Fixture - Decorative Glass Globe Pendant	Light Fixture - Decorative Historic Sconce
Light Fixture - Pendant Mounted 2x2 Troffer	Light Fixture - LED Track Light & Track
Light Fixture - Low Profile Linear Flat Rail	
Light Fixture - 2x2 Recessed Perimeter Fixture	
Light Fixture - Shallow Profile 4" Diameter Recessed Downlight	
Light Fixture - Shallow Profile 4" Diameter Recessed Wall Washer	
Light Fixture - 2x4 Recessed Troffer	
Light Fixture - Recessed Linear	
Light Fixture - Edge Lit Linear T-Bar Mount	
Light Fixture - Pinhole Downlight	
Light Fixture - Linear Surface-Mounted	
Light Fixture - Decorative Surface-Mounted	
Light Fixture - Decorative Surface-Mounted	



1 Level 3 Reflected Ceiling Plan
1/8" = 1'-0"

Finegold Alexander Architects

PROJECT TEAM:

OWNER:
Jones Library
 43 Amity Street
 Amherst, MA 01002

Structural Engineer:
 RSE Associates, Inc.
 63 Pleasant Street, Suite 200
 Watertown, MA 02472
 (617) 926-9300
 www.rseassociates.com

MEP/FP Engineer:
 BLW Engineers, Inc.
 311 Great Road
 Littleton, MA 01460
 (978) 486-4301
 www.blwengineers.com

Landscape Architect/Civil Engineer:
Berkshire Design Group
 4 Allen Place
 Northampton, MA 01060
 (413) 582-7000
 www.berkshiredesign.com

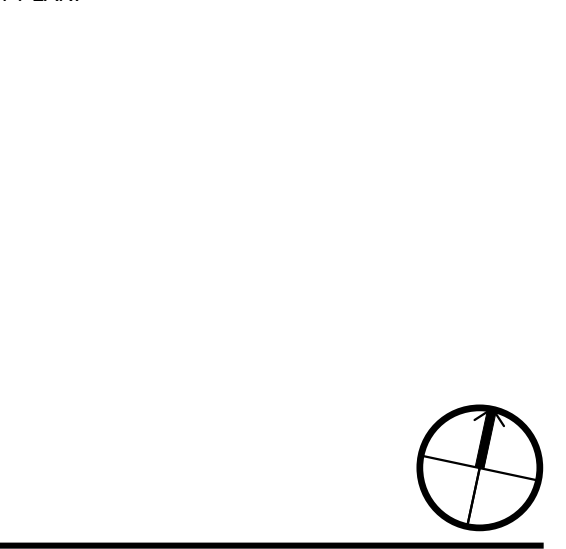
Interior Design:
Stefura Associates, Inc.
 77 N. Washington Street
 Boston, MA 02114
 (617) 723-5164
 www.stefura.com

Specifications Consultant:
Mark T. Wilhelm
 10 Doaks Lane
 Marblehead, MA 01945
 (781) 639-8339

Code Consultant:
Hastings Consulting, Inc.
 142 Hanlon Road
 Holliston, MA 01746
 (508) 397-5417
 www.hastings-consulting.com

Acoustical Consultant:
Acentech
 33 Moulton Street
 Cambridge, MA 02138
 (617) 498-9000

KEY PLAN:



SEAL:

PROJECT INFORMATION:

Jones Library
 43 Amity Street
 Amherst, MA 01002
 PROJECT #: P0269.00
 ISSUE DATE: January 10, 2024
 PROJECT STATUS: Bid Documents
 DRAWN BY: DL
 CHECKED BY: DW

SHEET NAME:

Reflected Ceiling
Plan - Level 3

DRAWING HISTORY:

NO.	DATE	DESCRIPTION
1	02/06/24	Addendum 01

SHEET #:

A123

LIGHTING FIXTURE SCHEDULE							
FIXTURE TYPE	DESCRIPTION	MANUFACTURER AND CATALOG NUMBER	LIGHT SOURCE				VOLTAGE
			LUMENS	TEMP	No.	WATTAGE	
PC-1	MICRO SQUARE PENDANT	REFER TO LIGHTING CONSULTANT SCHEDULE				LED	UNV
PC-1E	MICRO SQUARE PENDANT W/ EMERGENCY BATTERY	REFER TO LIGHTING CONSULTANT SCHEDULE				LED	UNV
PC-1A	MICRO SQUARE PENDANT	REFER TO LIGHTING CONSULTANT SCHEDULE				LED	UNV
PC-1AE	MICRO SQUARE PENDANT W/ EMERGENCY BATTERY	REFER TO LIGHTING CONSULTANT SCHEDULE				LED	UNV
PC-2-04'	4" MICRO SQUARE PENDANT	REFER TO LIGHTING CONSULTANT SCHEDULE				LED	UNV
PC-2-04'E	4" MICRO SQUARE PENDANT W/ EMERGENCY BATTERY	REFER TO LIGHTING CONSULTANT SCHEDULE				LED	UNV
PC-2-08'	8" MICRO SQUARE PENDANT	REFER TO LIGHTING CONSULTANT SCHEDULE				LED	UNV
PC-2-08'E	8" MICRO SQUARE PENDANT W/ EMERGENCY BATTERY	REFER TO LIGHTING CONSULTANT SCHEDULE				LED	UNV
PC-2-12'	12" MICRO SQUARE PENDANT	REFER TO LIGHTING CONSULTANT SCHEDULE				LED	UNV
PC-2-12'E	12" MICRO SQUARE PENDANT W/ EMERGENCY BATTERY	REFER TO LIGHTING CONSULTANT SCHEDULE				LED	UNV
PC-2-16'	16" MICRO SQUARE PENDANT	REFER TO LIGHTING CONSULTANT SCHEDULE				LED	UNV
PC-2-16'E	16" MICRO SQUARE PENDANT W/ EMERGENCY BATTERY	REFER TO LIGHTING CONSULTANT SCHEDULE				LED	UNV
PC-3-08'	8" MICRO SQUARE PENDANT	REFER TO LIGHTING CONSULTANT SCHEDULE				LED	UNV
PC-3-08'E	8" MICRO SQUARE PENDANT W/ EMERGENCY BATTERY	REFER TO LIGHTING CONSULTANT SCHEDULE				LED	UNV
PC-3-12'	12" MICRO SQUARE PENDANT	REFER TO LIGHTING CONSULTANT SCHEDULE				LED	UNV
PC-3-12'E	12" MICRO SQUARE PENDANT W/ EMERGENCY BATTERY	REFER TO LIGHTING CONSULTANT SCHEDULE				LED	UNV
PC-3-16'	16" MICRO SQUARE PENDANT	REFER TO LIGHTING CONSULTANT SCHEDULE				LED	UNV
PC-3-16'E	16" MICRO SQUARE PENDANT W/ EMERGENCY BATTERY	REFER TO LIGHTING CONSULTANT SCHEDULE				LED	UNV
PC-3-20'	20" MICRO SQUARE PENDANT	REFER TO LIGHTING CONSULTANT SCHEDULE				LED	UNV
PC-3-20'E	20" MICRO SQUARE PENDANT W/ EMERGENCY BATTERY	REFER TO LIGHTING CONSULTANT SCHEDULE				LED	UNV
PC-4	CHIME TAPER 18" LONG DECORATIVE LED DOWNLIGHT	REFER TO LIGHTING CONSULTANT SCHEDULE				LED	UNV
PC-5	4" DIAMETER PENDANT CYLINDER DOWNLIGHT	REFER TO LIGHTING CONSULTANT SCHEDULE				LED	UNV
PC-5E	4" DIAMETER PENDANT CYLINDER DOWNLIGHT W/ EMERGENCY BATTERY	REFER TO LIGHTING CONSULTANT SCHEDULE				LED	UNV
PC-6A/6B	SEMI-CURVED LED PENDANT	REFER TO LIGHTING CONSULTANT SCHEDULE				LED	UNV
PC-6AE/6BE	SEMI-CURVED LED PENDANT W/ EMERGENCY BATTERY	REFER TO LIGHTING CONSULTANT SCHEDULE				LED	UNV
PC-7	LARGE SCALE DECORATIVE LED PENDANT	REFER TO LIGHTING CONSULTANT SCHEDULE				LED	UNV
PC-8	DECORATIVE MULTI-DROP LED PENDANT	REFER TO LIGHTING CONSULTANT SCHEDULE				LED	UNV
PC-9	DECORATIVE LED GLASS GLOBE PENDANT	REFER TO LIGHTING CONSULTANT SCHEDULE				LED	UNV
PC-11	DECORATIVE LED PENDANT	REFER TO LIGHTING CONSULTANT SCHEDULE				LED	UNV
PC-12	PENDANT MOUNTED LED 2X2 TROFFER	REFER TO LIGHTING CONSULTANT SCHEDULE				LED	UNV
PC-12E	PENDANT MOUNTED LED 2X2 TROFFER W/ EMERGENCY BATTERY	REFER TO LIGHTING CONSULTANT SCHEDULE				LED	UNV
RB-1	LOW PROFILE LINEAR LED FLAT RAIL	REFER TO LIGHTING CONSULTANT SCHEDULE				LED	UNV
RC-1	2X2 LED RECESSED PERIMETER FIXTURE	REFER TO LIGHTING CONSULTANT SCHEDULE				LED	UNV
RC-1E	2X2 LED RECESSED PERIMETER FIXTURE	REFER TO LIGHTING CONSULTANT SCHEDULE				LED	UNV
RC-1A	2X2 LED RECESSED PERIMETER FIXTURE	REFER TO LIGHTING CONSULTANT SCHEDULE				LED	UNV
RC-1AE	2X2 LED RECESSED PERIMETER FIXTURE	REFER TO LIGHTING CONSULTANT SCHEDULE				LED	UNV
RC-2	SHALLOW PROFILE 4" DIAMETER RECESSED LED DOWNLIGHT (ACT CEILING)	REFER TO LIGHTING CONSULTANT SCHEDULE				LED	UNV
RC-2E	SHALLOW PROFILE 4" DIAMETER RECESSED LED DOWNLIGHT W/ EMERGENCY BATTERY (ACT CEILING)	REFER TO LIGHTING CONSULTANT SCHEDULE				LED	UNV
RC-2A	SHALLOW PROFILE 4" DIAMETER RECESSED LED DOWNLIGHT (GWB CEILING)	REFER TO LIGHTING CONSULTANT SCHEDULE				LED	UNV
RC-2AE	SHALLOW PROFILE 4" DIAMETER RECESSED LED DOWNLIGHT W/ EMERGENCY BATTERY (GWB CEILING)	REFER TO LIGHTING CONSULTANT SCHEDULE				LED	UNV
RC-2B	SHALLOW PROFILE 4" DIAMETER RECESSED LED WALL WASHER	REFER TO LIGHTING CONSULTANT SCHEDULE				LED	UNV
RC-2BE	SHALLOW PROFILE 4" DIAMETER RECESSED LED WALL WASHER W/ EMERGENCY BATTERY	REFER TO LIGHTING CONSULTANT SCHEDULE				LED	UNV
RC-3	RECESSED LED 2X2 TROFFER (ACT CEILING)	REFER TO LIGHTING CONSULTANT SCHEDULE				LED	UNV
RC-3E	RECESSED LED 2X2 TROFFER W/ EMERGENCY BATTERY (ACT CEILING)	REFER TO LIGHTING CONSULTANT SCHEDULE				LED	UNV
RC-3A	RECESSED LED 2X4 TROFFER (ACT CEILING)	REFER TO LIGHTING CONSULTANT SCHEDULE				LED	UNV
RC-3AE	RECESSED LED 2X4 TROFFER W/ EMERGENCY BATTERY (ACT CEILING)	REFER TO LIGHTING CONSULTANT SCHEDULE				LED	UNV
RC-3B	RECESSED LED 2X2 TROFFER (GWB CEILING)	REFER TO LIGHTING CONSULTANT SCHEDULE				LED	UNV
RC-3BE	RECESSED LED 2X2 TROFFER W/ EMERGENCY BATTERY (GWB CEILING)	REFER TO LIGHTING CONSULTANT SCHEDULE				LED	UNV

LIGHTING FIXTURE NOTES:

- REFER TO LIGHTING DESIGNER (LUMEN STUDIO) LIGHTING FIXTURE SCHEDULE FOR ADDITIONAL LIGHTING FIXTURE DETAILS AND APPROVED EQUALS.
 - ALL RECESSED FIXTURE TRIMS TO BE PAINTED TO MATCH CEILING.
 - PROVIDE A COMPLETE AND OPERABLE SYSTEM INCLUDING ALL NECESSARY MOUNTING HARDWARE, POWER FEEDS, WIRING CONNECTIONS, DRIVERS, AND CONTROL INTERFACES.
 - PAIN ALL FLANGES INSTALLED IN DRYWALL TO MATCH ADJACENT CEILING FINISH. FLANGES SHALL BE REMOVED FROM CEILING PRIOR TO PAINTING, OR RAZOR CUT AFTER PAINTING TO ALLOW FOR REMOVAL OF THE TRIM FROM THE CEILING.
- * ELECTRICAL CONTRACTOR SHALL PROVIDE DIMMABLE LED REPLACEMENT LAMPS, LAMP COLOR TEMPERATURE 2700K, AS INDICATED ON THE LIGHTING FIXTURE SCHEDULE.
** ELECTRICAL CONTRACTOR SHALL PROVIDE ALL NECESSARY COMPONENTS FOR A COMPLETE AND OPERATIONAL SYSTEM.

LIGHTING FIXTURE SCHEDULE							
FIXTURE TYPE	DESCRIPTION	MANUFACTURER AND CATALOG NUMBER	LIGHT SOURCE				VOLTAGE
			LUMENS	TEMP	No.	WATTAGE	
RC-3C	RECESSED LED 2X4 TROFFER (GYP CEILING)	REFER TO LIGHTING CONSULTANT SCHEDULE				LED	UNV
RC-3CE	RECESSED LED 2X4 TROFFER W/ EMERGENCY BATTERY (GYP CEILING)	REFER TO LIGHTING CONSULTANT SCHEDULE				LED	UNV
RC-4-8'	8" RECESSED LINEAR LED	REFER TO LIGHTING CONSULTANT SCHEDULE				LED	UNV
RC-4-8'E	8" RECESSED LINEAR LED W/ EMERGENCY BATTERY	REFER TO LIGHTING CONSULTANT SCHEDULE				LED	UNV
RC-4A-12'	12" RECESSED LINEAR LED	REFER TO LIGHTING CONSULTANT SCHEDULE				LED	UNV
RC-4A-12'E	12" RECESSED LINEAR LED W/ EMERGENCY BATTERY	REFER TO LIGHTING CONSULTANT SCHEDULE				LED	UNV
RC-4A-4'	4" RECESSED LINEAR LED	REFER TO LIGHTING CONSULTANT SCHEDULE				LED	UNV
RC-4A-4'E	4" RECESSED LINEAR LED W/ EMERGENCY BATTERY	REFER TO LIGHTING CONSULTANT SCHEDULE				LED	UNV
RC-4A-8'	8" RECESSED LINEAR LED	REFER TO LIGHTING CONSULTANT SCHEDULE				LED	UNV
RC-4A-8'E	8" RECESSED LINEAR LED W/ EMERGENCY BATTERY	REFER TO LIGHTING CONSULTANT SCHEDULE				LED	UNV
RC-5	EXTERIOR SHALLOW* RECESSED DOWNLIGHT	REFER TO LIGHTING CONSULTANT SCHEDULE				LED	UNV
RC-5E	EXTERIOR SHALLOW* RECESSED DOWNLIGHT W/ EMERGENCY BATTERY	REFER TO LIGHTING CONSULTANT SCHEDULE				LED	UNV
RC-6-5'	2" EDGE LIT LINEAR LED T-BAR MOUNT	REFER TO LIGHTING CONSULTANT SCHEDULE				LED	UNV
RC-6-5'E	2" EDGE LIT LINEAR LED T-BAR MOUNT W/ EMERGENCY BATTERY	REFER TO LIGHTING CONSULTANT SCHEDULE				LED	UNV
RC-7	LED PINHOLE DOWNLIGHT	REFER TO LIGHTING CONSULTANT SCHEDULE				LED	UNV
RC-7E	LED PINHOLE DOWNLIGHT W/ EMERGENCY BATTERY	REFER TO LIGHTING CONSULTANT SCHEDULE				LED	UNV
RC-7A	LED PINHOLE DOWNLIGHT	REFER TO LIGHTING CONSULTANT SCHEDULE				LED	UNV
RC-7AE	LED PINHOLE DOWNLIGHT W/ EMERGENCY BATTERY	REFER TO LIGHTING CONSULTANT SCHEDULE				LED	UNV
RC-8-4'	4" RECESSED LINEAR LED	REFER TO LIGHTING CONSULTANT SCHEDULE				LED	UNV
RC-8-4'E	4" RECESSED LINEAR LED W/ EMERGENCY BATTERY	REFER TO LIGHTING CONSULTANT SCHEDULE				LED	UNV
RC-8-8'	8" RECESSED LINEAR LED	REFER TO LIGHTING CONSULTANT SCHEDULE				LED	UNV
RC-8-8'E	8" RECESSED LINEAR LED W/ EMERGENCY BATTERY	REFER TO LIGHTING CONSULTANT SCHEDULE				LED	UNV
SC-1-04'	4" LINEAR SURFACE MOUNTED LED	REFER TO LIGHTING CONSULTANT SCHEDULE				LED	UNV
SC-1-04'E	4" LINEAR SURFACE MOUNTED LED W/ EMERGENCY BATTERY	REFER TO LIGHTING CONSULTANT SCHEDULE				LED	UNV
SC-1-08'	8" LINEAR SURFACE MOUNTED LED	REFER TO LIGHTING CONSULTANT SCHEDULE				LED	UNV
SC-1-08'E	8" LINEAR SURFACE MOUNTED LED W/ EMERGENCY BATTERY	REFER TO LIGHTING CONSULTANT SCHEDULE				LED	UNV
SC-2	DECORATIVE SURFACE MOUNTED LED	REFER TO LIGHTING CONSULTANT SCHEDULE				LED	UNV
SC-3	DECORATIVE LED CEILING MOUNTED FIXTURE	REFER TO LIGHTING CONSULTANT SCHEDULE				LED	120
SC-4	DECORATIVE LED SURFACE MOUNTED FIXTURE	REFER TO LIGHTING CONSULTANT SCHEDULE				LED	UNV
SC-5	SMALL SCALE MONOPOINT MOUNTED LED WALL WASHER	REFER TO LIGHTING CONSULTANT SCHEDULE				LED	120
SC-6	SURFACE MOUNTED LED 2X2 TROFFER	REFER TO LIGHTING CONSULTANT SCHEDULE				LED	UNV
SC-6E	SURFACE MOUNTED LED 2X2 TROFFER W/ EMERGENCY BATTERY	REFER TO LIGHTING CONSULTANT SCHEDULE				LED	UNV
SW-1-2'	2" LED STRIP LIGHT	REFER TO LIGHTING CONSULTANT SCHEDULE				LED	UNV
SW-1-2'E	2" LED STRIP LIGHT W/ EMERGENCY BATTERY	REFER TO LIGHTING CONSULTANT SCHEDULE				LED	UNV
SW-1-4'	4" LED STRIP LIGHT	REFER TO LIGHTING CONSULTANT SCHEDULE				LED	UNV
SW-1-4'E	4" LED STRIP LIGHT W/ EMERGENCY BATTERY	REFER TO LIGHTING CONSULTANT SCHEDULE				LED	UNV
SW-2E	SMALL PROFILE WALL MOUNTED LINEAR W/ EMERGENCY BATTERY	REFER TO LIGHTING CONSULTANT SCHEDULE				LED	UNV
SW-3-2'	2" LINEAR LED DECORATIVE VANITY SCOCNE	REFER TO LIGHTING CONSULTANT SCHEDULE				LED	120
SW-3-4'	4" LINEAR LED DECORATIVE VANITY SCOCNE	REFER TO LIGHTING CONSULTANT SCHEDULE				LED	120
SW-4	DECORATIVE HISTORIC SCOCNE	REFER TO LIGHTING CONSULTANT SCHEDULE				LED	120
SW-5	SMALL-SCALE WALL MOUNTED LED CYLINDER	REFER TO LIGHTING CONSULTANT SCHEDULE				LED	120
SW-5E	SMALL-SCALE WALL MOUNTED LED CYLINDER W/ EMERGENCY BATTERY	REFER TO LIGHTING CONSULTANT SCHEDULE				LED	120
SW-6	DECORATIVE LED SCOCNE	REFER TO LIGHTING CONSULTANT SCHEDULE				LED	120
TM-1	LED TRACK LIGHT	REFER TO LIGHTING CONSULTANT SCHEDULE				LED	120
TM-2	LED TRACK LIGHT	REFER TO LIGHTING CONSULTANT SCHEDULE				LED	120
TM-3	LED TRACK LIGHT	REFER TO LIGHTING CONSULTANT SCHEDULE				LED	120
TR-1	LED LINEAR TRACK	REFER TO LIGHTING CONSULTANT SCHEDULE				LED	120
TR-2	LED LINEAR TRACK	REFER TO LIGHTING CONSULTANT SCHEDULE				LED	120
TR-3	SURFACE TRACK	REFER TO LIGHTING CONSULTANT SCHEDULE				LED	120
	EXTERIOR RATED REMOTE EMERGENCY HEAD WITH PROCTOR POWER MODULE	EXTRONIX # RPH-8RAMP-WP	-	-	2	3.6	LED 120
	WALL OR CEILING MOUNTED EMERGENCY BATTERY UNIT WITH TWO (2) HEADS, PROVIDE WITH SELF-TEST/SELF-DIAGNOSTICS, 30" O.C. MAX	EXTRONIX # LED-S2-WH-G2	-	-	2	2.0	LED 120
	WALL OR CEILING MOUNTED EMERGENCY BATTERY UNIT WITH TWO (2) HEADS, PROVIDE WITH SELF-TEST/SELF-DIAGNOSTICS, 36" O.C. MAX	EXTRONIX # NTF-3W-G2	-	-	2	2.7	LED 120
	WALL OR CEILING MOUNTED EMERGENCY BATTERY UNIT WITH TWO (2) HEADS, PROVIDE WITH SELF-TEST/SELF-DIAGNOSTICS, 11.5" O.C. MAX	EXTRONIX # NTF-HC-W-G2	-	-	2	5.4	LED 120
	SINGLE OR DOUBLE FACE EDGE LIT EXIT SIGN, REFER TO FLOOR PLANS FOR DIRECTIONAL ARROWS AND MOUNTING TYPES (WALL/CEILING)	EXTRONIX # SINGLE: S802-WB-SR-RC-BA DOUBLE: S803-WB-SR-RA-BA	-	-	1	4	LED 120
	SINGLE FACE EDGE LIT EXIT SIGN W/ ACCESSIBLE SYMBOL, REFER TO FLOOR PLANS FOR DIRECTIONAL ARROWS AND MOUNTING TYPES (WALL/CEILING)	EXTRONIX # SINGLE: CT902-S-WB-RC-WH DOUBLE: CT903-S-WB-RM-WH	-	-	1	4	LED 120

LIGHTING FIXTURE NOTES:

- REFER TO LIGHTING DESIGNER (LUMEN STUDIO) LIGHTING FIXTURE SCHEDULE FOR ADDITIONAL LIGHTING FIXTURE DETAILS AND APPROVED EQUALS.
 - ALL RECESSED FIXTURE TRIMS TO BE PAINTED TO MATCH CEILING.
 - PROVIDE A COMPLETE AND OPERABLE SYSTEM INCLUDING ALL NECESSARY MOUNTING HARDWARE, POWER FEEDS, WIRING CONNECTIONS, DRIVERS, AND CONTROL INTERFACES.
 - PAIN ALL FLANGES INSTALLED IN DRYWALL TO MATCH ADJACENT CEILING FINISH. FLANGES SHALL BE REMOVED FROM CEILING PRIOR TO PAINTING, OR RAZOR CUT AFTER PAINTING TO ALLOW FOR REMOVAL OF THE TRIM FROM THE CEILING.
- * ELECTRICAL CONTRACTOR SHALL PROVIDE DIMMABLE LED REPLACEMENT LAMPS, LAMP COLOR TEMPERATURE 2700K, AS INDICATED ON THE LIGHTING FIXTURE SCHEDULE.
** ELECTRICAL CONTRACTOR SHALL PROVIDE ALL NECESSARY COMPONENTS FOR A COMPLETE AND OPERATIONAL SYSTEM.

PROJECT TEAM:

OWNER:
Jones Library

Structural Engineer
RSE Associates, Inc.
63 Pleasant Street, Suite 200
Watertown, MA 02472
(617) 926-9300
www.rseassociates.com

MEP FP Engineer
BLW Engineers, Inc.
311 Great Road
Littleton, MA 01460
(978) 486-4301
www.blwengineers.com

Landscape Architect/Civil Engineer
Berkshire Design Group
4 Allen Place
Northampton, MA 01080
(413) 582-7000
www.berkshiredesign.com

Interior Design
Sterfa Associates, Inc.
77 N. Washington Street
Boston, MA 02114
(617) 723-5164
www.sterfa.com

KEY PLAN:

SCALE:

PROJECT INFORMATION:

Jones Library

43 Amity Street
Amherst, MA 01002
PROJECT #: P0269.00
ISSUE DATE: January 10, 2024
PROJECT STATUS: Bld Documents
DRAWN BY: SW
CHECKED BY: DK

SHEET NAME:

Schedules

DRAWING HISTORY:

NO.	DATE	DESCRIPTION
1	02/06/24	Addendum 01

SHEET #:

E005B